

Banana Heart Sap Experiment

I Nengah Wirakesuma¹, I Wayan Mudana², I Wayan Kondra³, I Ketut Mustika⁴, I Wayan Sujana⁵

¹ Master of Arts Postgraduate ISI Denpasar , Indonesia ²⁻⁵ FSRD (Fine Arts) ISI Denpasar, Indonesia

Email: wirakesuma1964@gmail.com ¹ , wayanmudana63@gmail.com ² , wayankondra@isi-dps.ac.id ³ , iketutmustika@isi-dps.ac.id ⁴ , sukklusujana@gmail.com ⁵

Abstract

A unique and interesting creative process using banana blossom sap as a medium. Banana flower sap has specific characteristics compared to other synthetic colors. Banana flower sap tends to display typical milky white, gray, light brown, yellowish-green, red and dark brown colors. Painting using banana blossoms starts from picking the banana blossom. Exploration of the technique of cutting the stem of the banana flower until the sap oozes out and drips onto the canvas. Since then I have been practicing spontaneously using banana sap, involving movements of my fingers, pressing the banana flower gently, medium and hard. The effect of the pressure of the banana flower sap produces natural colors, according to the intensity of the movement of the fingers on the canvas. The method used is carried out spontaneously, following the stages of the art creation process (E4): Existence, Exploration, Experimentation and Evaluation. Realization (E4) represents the existence of my creative process. Utilization of fine art elements such as light, point, line, space, plane, color, texture and composition. The resulting works of art include the following titles: Banana Sap Color 1, Banana Sap Color 2, Banana Sap Color 3, and so on. The use of banana blossom sap is driven by the need to express the soul in order to produce new works of art of high quality and have high aesthetic values.

Keywords: Exploration, Sap, Banana Heart .

INTRODUCTION

When the season banana fruit in the garden the author looks at Bananas ready to be harvested . Bananas picked direct from the tree own nuance color many kinds of depends from type of banana picked . If it's picked Still aged more young so the fruit colored yellow reddish . While when banana heart that is enough old so color his skin red old , purplish red , blackish red . The aesthetics of the colors displayed are very attractive . the author's attention . Besides show character the various colors also have unique shape . After heart cut into pieces into two parts , the stem is cut emit colored sap milky white and grey . Then the author observes in a way carefully and try to scratch on the t -shirt colored white . After a few weeks of sap banana heart attached to a t-shirt hard to remove . With incident like This author tries to explore sap banana heart on cloth canvas . Some the work produced is expression expression the soul that is done in a way spontaneity based on need creativity in creation art .

Creativity often produce expression create work on each work artist . Artist in the creative process his work can't get away from expression his soul . Every work reflect teak self the artist . The meaning of " expression " peaked in the romantic period at a time when the art consider " art " as spark from emotions that overflowed within the

artist . In a way extreme between they some people think that a works that are not contain element expression is No art . Mistake This No last long. However Thus , the concept of " transmission " emotions that must be able to felt audience ", still a long time ago important grip for observers arts , (Djelantik, 1992: 87).

Radiance emotions emitted by a person artist is expression the soul that has value and depth meaning . Depth the meaning expressed in the strokes color on cloth canvas is satisfaction self in expressing everything the burden on the mind as if eroded and controlled by emotions soul and feeling. Character the true artist looks evident in his work. Character color and line strokes are spill emotion a soul that often inspires the soul of another person who sees it . At the beginning of the creation process art painting by using latex banana heart the author is interested with the sap that sticks to the shirt white color banana sap spilled on the shirt white is permanent difficult removed with soap wash any brand. Previously the author often did the creation process art using paper recycling, newspapers used, paper field ban, manila paper , paper duplex and buffalo paper. However thus creation art painting done on the media on as a process of creativity, media exploration and experimentation.

Preparation for creativity is mostly done on the basis of " interest ", such as it says ", There is no the big thing that can created when No There is enthusiasm ". For things certain even , done only based on " faith " such as expressed to create things big , we No only have to try , but also have to dream . (David Campbell, 1986: 19).

Work skills are part important in the work creative . However many ideas , thoughts , inspirations , and dreams beautiful-beautiful found , if No can realized , all of that will be disappeared like dew hit by ray sun . So except creative , must be own good work skills in a way personal and also in a way together in a group . Experiment sap banana heart done in a way spontaneity on the basis of sincere intention and interest willing to produce character distinctive , specific , classic , unique and attractive colors and lines .

Experiment to various type color / latex from fruits done in a way routine to get character color with existing characteristics namely : color / sap milky white , yellow , gray , brown old , and black . The color produced by banana flowers is very attractive the author's attention to be made draft research , that sap banana heart as material alternatives in the creation process work art painting . Utilization of alternative media Banana sap is the result of the author's experience , wanderings and anxiety in processing create art . Travel long nurse ' intercropping ' garden a lot experience unique and interesting to get . Banana trees , have different forms and characters . The author tries to identify various type fruit to get various elements resulting color . Every fruit produce color with various its uniqueness . Banana heart tends to produce color milky white , gray after scratched on cloth canvas . Since scratch sap banana heart above cloth the author's canvas finds color unique characteristics . The initial process sap banana heart drawn on cloth canvas looks colored white to grayish , after in progress for 1-3 months color banana sap changes become color chocolate old .

The process of creation work art always related with How somebody capable apply his experiences into text narrative and then visualize it through the process of creation art on canvas . The reverse process make common thing become outside usual , to be strange things are equally useful for thinker creative . Familiarity give birth to conformity . Therefore objects , ideas, or humans are already it's a common thing , we stop think about they . Like Seneca said , " Familiarity reduce greatness something ", Seeing it as something strange , foreign , problematic , not satisfying , or rather foreign

rekindle the mind we . Remember proverb that God hides something the near with we . (John Adair, 2008: 16).

Often what is close with self We without realized own uniqueness and distinctiveness alone . When the author is close with banana tree in the garden , the author gets Banana latex has distinctive color different with colors synthetic others . Experiments about banana sap continues done to get identification the sap produced . Then the author of the experiment by using latex banana heart . Where is the sap? easy banana heart found in gardens , in markets and in shops vegetables and fruits . In several experiments the author found various type character color after etched on canvas . Sap banana heart initially show color milky white , then changed become grey, fawn , dark brown and black . The color of the banana sap appears more sharp when coated substance preservative (Belazo Art Spray Paint), which is sprayed on the canvas . Character color milky white looks experience change become color chocolate old . Specifications uniqueness banana sap is getting more and more clear and sharp . Findings This can convince the author that Banana sap is an alternative medium in the creation process work art painting .

Method of creation art painting with banana sap begins from various stages method creation (E4); Existence, Exploration , Experimentation , and Evaluation , then writer can formulate things as following : How is the idea/ concept utilizing banana sap as a medium work art painting ?, How? implementation technique paint with banana sap medium ?, How? aesthetics color / banana sap in painting ?. With formulation the above problem writer do stages of the creation process art paint to be able to realize , describe as well as evaluate values aesthetics color / banana sap on top canvas .

The general objective of research on the creation of works of art related to the concept create art use banana sap as experiment is to find out the extent of aesthetic value color / banana sap contained in it . Values the aesthetics that emerge outlined become narrative on each work art the resulting painting . So that work the art produced can inspiring soul feelings of others who see it . The results of the study " Experiment Sap Banana Heart ", is expected become reference create art for public broad . The specific objective is to identify works of fine art that use sap banana blossoms as a source for creating works of art. The writer identifies and evaluates the visual form of the creation art painting is displayed. As study material the artistic creation is then analyzed for used as a guidebook for the teaching and learning process of fine arts and design in development art nationally and internationally .

RESEARCH METHOD

Research methods used in the creation process art painting " Experiment Sap Heart Banana" on cloth canvas is to use the method collection of visual data in the form of related documents with the process of creation work art painting . Documentation of the medium, materials and tools used in the creative process work art painting in a way spontaneity is is steps , stages of the process are record traces that must be immortalized according to research needs . Then stages interview with expert knowledge knowledge art appearance is also done to get study about colors produced by nature . Field survey done use get banana sap medium as material color the basis for painting on canvas .

Medium is means used to support formation A work art . The medium later in art appearance called element / element appearance or appearance basic . While form art appearance is arrangement or configuration from elements appearance . Elements similar appearance with natural called figurative. Material (material) is material the

basis for making a medium such as : (substance color), sand , stone, wood , fruit , paper , metal , cement and so on . (Dharsono Sony Kartika, 2004,8)

Research process , creation art entitled aesthetics soon the author's appearance uses the related E5 theory with the Art Creation Method , 1. Existence , 2. Exploration , 3. Experiment . 4. Realization , 5. Evaluation . In addition , the author uses the method approach with method study namely : 1. Method of collecting data on the medium, 2. Interview method with scientists and artists , 3. Documentation method . From the overall results of data collection in the form of interview and arrangement documents materials and tools used , then the author reanalyzes them to get accurate analysis results . related use of alternative media " Experiment Sap Heart Banana" on canvas . Evaluation about mark aesthetics compiled and analyzed as well as conclusion in a way careful use get validity mark good and correct aesthetics in accordance with physique work art that is made source study creation art .

RESULTS AND DISCUSSION

Analysis Rubber Painting Art Banana Heart

Theory of relativity , what happened and what was observed , brilliant people tend to confirm that 'Everything is relative ' , Maybe a term the not enough profitable that is certain the word has accompanying philosophers and lay people going to confusion . They imagine that the new theory prove that *all something* in nature physical is relative , whereas , conversely , theory the fully related with attempt to separate the relative side and arrive at a statement about laws completely physical No will depending on the conditions observer. (Bertrand Russell, 2006, 13)

As per the statement on can withdrawn thread red that evaluation aesthetics colors and lines in the work art painting with the medium " Experiment " Sap Banana Heart " , on canvas contain elements physique work , because work art is object object physical that has value and meaning , value physique the work is very relative its nature . Therefore observation to work art painting must also be mastered knowledge about aesthetics art and philosophy art . aesthetics art more close the relation with the beauty of the work art itself , the elements art always binding and existing in the physical work art . While philosophy art always object and subject oriented art , where subject art always refers to ideas, notions and concepts creation art . The development of painting with the alternative medium " Experiment Sap Banana Heart " , on the canvas shows a joyful dynamic, this is due to the presence of various new possibilities in the process of creation art . These new possibilities is the existence of a new alternative medium that has never been seen before used in the creation process art .

Embodiment art painting in its dynamics always leading to development art that can not be separated from need people human beings in the world. Creation art is very controversial overturn all form stability art , values , styles , galleries , art market , etc. Initially hard to understand because it uses a variety of media or art materials as consequence from complexity idea or the ideas of the artists . Some artist No interested rejecting traditional icons namely style , values and aura of art . In addition , the market system that is not enter reason , limitations room galleries and the dominance of curators art that is increasingly narrow down room motion art and artists . The more sharpen the reaction of artists to create new art, (Dharsono Sony Kartika, 2004,123)

Analysis creation art painting using the medium " Experiment " Sap Banana Heart " , on canvas is new measures in connection with rebellion creative artist , finally the creative process art can walk along journey history development art . " Experiment Sap

Banana Heart ", as material paint is not a new medium, but rather is a new alternative medium for creation work art painting . The process of creation work art painting with alternative media sap banana heart can explained and described as following :



Figure 1.
Painter: I Nengah Wirakesuma . Painting Process with *Sap Banana Heart* ,
Size: 50 cm x 65 cm, Year: 2024 .
(Source: Documentation GGBharawadja)

The process of creation work art painting is embodiment work create art done on canvas using a rubber medium banana heart on canvas measuring 50 cm x 65 cm, materials used is sap banana heart , created in 2024. Before painting on canvas , cloth canvas coated with colored paint white with the brand Meri'es Acrylic Color , A-4500, 104, Titanium White with the aim is for the fibers and pores cloth canvas closed tight and surface canvas become more smooth . After surface cloth the canvas is dry then spread it out on the table with position horizontally , which aims to facilitate the painting process . After pores canvas closed meeting then the painting process is carried out with banana sap medium . Experiment done in a way routine on the table with cut into pieces stalk banana heart then squeezing until emit sap . Exploration materials , materials become the color medium in the process of realizing work art painting . Final stage done with coating and spraying substance coating , substance preservative (Belazo Art Spray Paint), so that the work the art produced own long lasting and non-fading quality easy faded and can fulfil criteria as work art painting that has values novelty .



Figure 2 .

Painter: I Nengah Wirakesuma .

Title: Expression Banana Latex 1 , Ingredients: *Latex Banana Heart* ,

Size: 20 cm x 25 cm, Year: 2023 .

(Source: Documentation GGBharawadja)

Analysis physique work art painting entitled , Expression Sap Banana Heart 1 , is embodiment work create art done on canvas by using banana sap as a medium on a canvas measuring 20 cm x 25 cm, the materials used is banana sap , created in 2023. Physical The work was created on canvas that has been stretched on a stretcher with thickness 2 cm, Before paint canvas coated with colored paint white with the brand Meri'es Acrylic Color , A-4500, 104, Titanium White with the aim is for the fibers and pores cloth canvas closed tight and surface canvas become more smooth . After pores canvas closed meeting then the painting process is carried out with alternative medium of banana sap . Experiment done in a way routine , Exploration materials and materials become a very important part in realizing physique work art . Evaluation is stage end done with coating , spraying substance coating , substance preservative (Belazo Art Spray Paint), expected physique work the art produced own long lasting and non-fading quality easy faded as well as fulfil criteria as work new art that has values aesthetics about expression harmonious colors and lines on canvas .

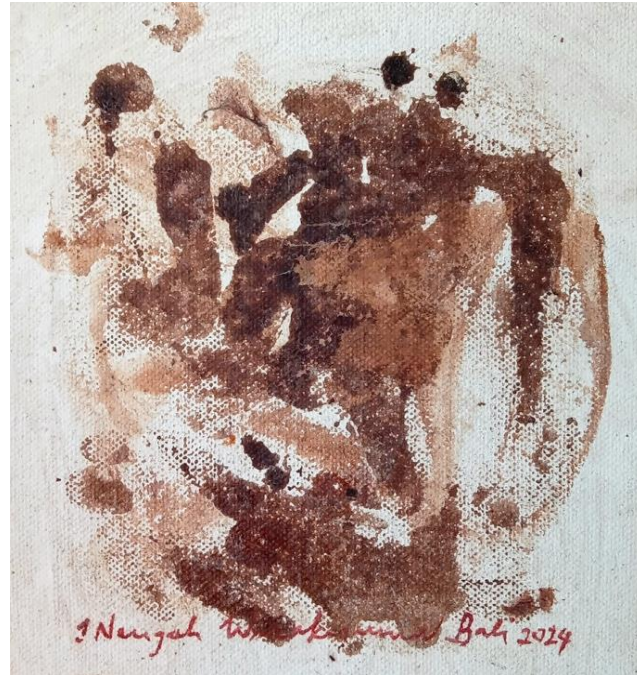


Figure 3 .

Painter: I Nengah Wirakesuma .

Title: Expression Banana Latex 2 , Ingredients: *Latex Banana Heart* ,

Size: 20 cm x 20 cm, Year: 2024 .

(Source: Documentation GGBharawadja)

Analysis physique work art painting entitled , Expression Sap Banana Heart 2 , is embodiment work create art done on canvas by using banana sap as a medium on a canvas measuring 20 cm x 20 cm, the materials used is banana sap , created in 2024. Physical The work was created on canvas that has been stretched on a stretcher with thickness 2 cm, Before paint canvas coated with colored paint white with the brand Meri'es Acrylic Color , A-4500, 104, Titanium White with the aim is for the fibers and pores cloth canvas closed tight and surface canvas become more smooth . After pores canvas closed meeting then the painting process is carried out with alternative media banana sap . Experiment done in a way routine , Exploration materials and materials become a very important part in realizing form from colors and lines on the fabric canvas. The colors that are etched into the work art painting with title : Expression banana latex 2 is colors chocolate old blackish . Evaluation stage end expected physique work art coated with spray substance coating , substance preservative (Belazo Art Spray Paint), expected physique work the art produced own long lasting and non-fading quality easy faded and peeled , then work the art produced fulfil criteria as work new art that has values aesthetics about expression colors and lines of banana sap .



Figure 4 .

Painter: I Nengah Wirakesuma .

Title: Expression Banana Latex 3 , Ingredients: *Sap Banana Heart* ,

Size: 20 cm x 20 cm, Year: 2024 .

(Source: Documentation GGBharawadja)

Analysis physique work art painting entitled , Expression Sap Banana Heart 3 , is embodiment work create art done on canvas by using banana sap as a medium on a canvas measuring 20 cm x 20 cm, the materials used is banana sap , created in 2024. Physical The work was created on canvas that has been stretched on a stretcher with thickness 2 cm, Before paint canvas coated with colored paint white with the brand Meri'es Acrylic Color , A-4500, 104, Titanium White with the aim is for the fibers and pores cloth canvas closed tight and surface canvas become more smooth . After pores canvas closed meeting then the painting process is carried out with banana sap medium . Experiment done in a way routine with squeezing banana heart and scratched on canvas . Exploration materials and materials become a very important part in realizing physique work art the desired painting . The colors that appear tend to color chocolate young and brown dark and reddish brown . Expression of lines and colors become One a unified whole so that looks transparent . The parts of the lines and colors that experience accumulation scratches looks more sharp and impressive become color chocolate old . Evaluation is stage end expected physique work art coated with spray substance coating , substance preservative (Belazo Art Spray Paint), expected physique work the art produced own long lasting and non-fading quality easy faded as well as fulfil criteria as work new art that has values aesthetics about art and beauty .

Aesthetic Analysis of Banana Sap / Color

Analysis expression color / latex banana heart , work art painting entitled Expression Banana Latex 1,2 and 3 are embodiment work create the art that is done above canvas measuring 20 cm x 25 cm, 20 cm x 20 cm, the materials used is banana color / sap was created in 2023 and 2024. The color and lines were created on top canvas that has been stretched on a stretcher with 5 cm thickness , Before paint cloth

canvas coated with colored paint white Meri'es Acrylic Color brand , A-4500, 104, Titanium White with the aim is for the fibers and pores cloth canvas closed with tight and surface cloth canvas become more smooth . The process of creation art painting with the alternative medium of Natural Mangosteen Skin Color is done with method creation , technique to split skin mangosteen into two parts Then skin mangosteen is squeezed and kneaded with fingers hand to remove color purplish red and blue , then at the stage polishing squeeze skin mangosteen on top cloth canvas done emphasis with fingers hand in a way soft , medium and slightly hard to natural skin color mangosteen own nuance various colors and lines as well as own effect artistic , classic , unique and interesting the attention of others who see it .

CONCLUSION

Creation process art painting stated finished , continued by observing the creation art painting using alternative mediums namely ' Sap Banana Heart . It can be concluded that utilization of alternative media sap banana heart is steps new in the process of creation work art painting . Steps new thing done is is breakthrough new in the creative process human . Artwork painting with sap banana heart produces effect classic , unique and attractive colors . In connection with exploration of latex medium banana heart as a painting medium , then the next process done with method creation art (4E): Existence , Exploration , Experimentation , Evaluation , then be born aesthetics about color / latex banana heart poured on top canvas . Various forms of visual color / latex banana heart poured with technique use fingers hand in a way simultaneously and spontaneously . With movements fingers spontaneous hands can produce dimensions and dynamics expressive colors and lines varies as well as own values high artistic quality . the resulting color with banana sap is dominated by color reddish yellow , brown , brownish , brown old . The aesthetics of color and lines of the latex medium banana heart has specific , transparent , textured characteristics especially on the strokes colors and lines that cover pores cloth canvas . The author and also the creator of the painting can conclude that sap banana heart has quality who does not lost with colors production factory . This is due to banana sap if Already stick to the cloth canvas difficult For removed

REFERENCES

- Bertrand Russell, 2006, Theory of Relativity Einstein , Explanation Popular for the public , Pustaka Pelajar Publisher , Yogyakarta.
- Dharsono Sony Kartika, 2004, Modern Fine Arts , Publisher Engineering Science, Bandung
- Dharsono Sony Kartika, 2004, Modern Fine Arts , Publisher Engineering Science, Bandung
- Dharsono Sony Kartika, 2004, Modern Fine Arts , Publisher Engineering Science, Bandung
- Dharsono Sony Kartika, 2004, Modern Fine Arts, Publisher Engineering Science, Bandung
- David Campbell, 1986, Developing Creativity , Publisher Canisius Member of IKAPI, Yogyakarta.
- Djelantik, 1992, Introduction to Basic Science Aesthetics , Philosophy Beauty and Arts , Indonesian College of the Arts (STSI) Denpasar.
- John Lechte , 2001, 50 Philosophers Contemporary , from Structuralism until Postmodernity , Publisher Canisius Yogyakarta.
- John Adair, 2008, The Art Of Kreative Thinking , (The Art Of Kreative Thinking) Creative),

I Nengah Wirakesuma ¹, I Wayan Mudana ², I Wayan Kondra ³, I Ketut Mustika ⁴, I Wayan Sujana ⁵

Become Innovative and Creative in Developing New ideas . Golden Book of New Buildings Yogyakarta.

John Adair, 2008, The Art Of Kreative Thinking , (The Art Of Kreative Thinking) Creative), Become Innovative and Creative in Developing New ideas . Golden Book Gedungan Baru Yogyakarta

John Adair, 2008, The Art Of Kreative Thinking , (The Art Of Kreative Thinking) Creative), Become Innovative and Creative in Developing New ideas . Golden Book Gedungan Baru Yogyakarta

Copyright holder:

I Nengah Wirakesuma ¹, I Wayan Mu Dana ², I Wayan Kondra ³, I Ketut Mustika ⁴, I Wayan Sujana ⁵ (2024)

First publication right:

Journal of Social Science

This article is licensed under:

